

An aerial photograph of Mount Rainier National Park. The snow-capped peak of Mount Rainier is visible at the top. A winding path, highlighted in a light color, starts near the mountain and follows the Carbon River valley down towards the bottom of the frame. The surrounding landscape is a mix of forested areas and open spaces.

A Lifeline to Mount Rainier National Park

The Carbon River Valley

Over a century ago, the people of the United States of America set aside Mount Rainier as America's fifth national park. The Park's boundaries were drawn straight across a vast wilderness. Today, these boundaries do not reflect the natural ecosystems and processes needed to maintain the health of the Park.

Logging along its borders, urbanization, and population growth have left the Park an ecological island and have threatened the integrity of this national gem.

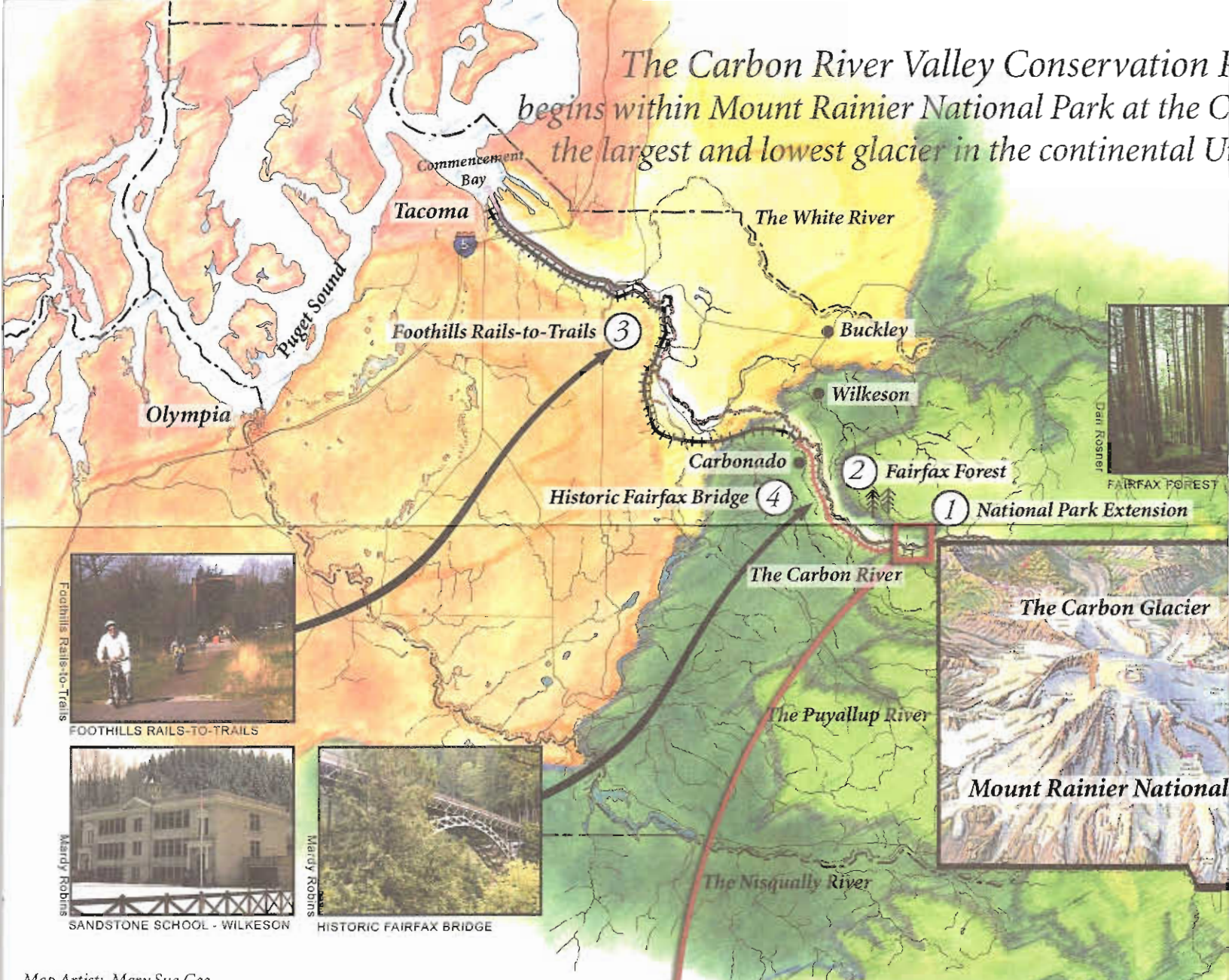
The National Park Service is seeking a three-mile boundary extension at the Carbon River entrance. The Carbon River Valley Conservation Project begins within this extension. Our mission is to preserve critical open space down the corridor of the Carbon River to its confluence with the Puyallup River, protecting important habitat for federally-listed threatened and endangered species. Extending the Park along the Carbon River watershed creates a lifeline that safeguards the ecological integrity of the valley and sustains Mount Rainier National Park.

This effort needs congressional approval. Please contact and urge your elected officials to support this extension.

This vision supported by:

Mount Rainier National Park
The Mountaineers
Cascade Land Conservancy
Foothills Rails-to-Trails
Tahoma Audubon Society
The Wilkeson Historical Society
Pacific Forest Trust
Sierra Club
Puyallup Tribe of Indians
Puyallup River Watershed Council
Biodiversity Northwest
North Cascades Conservation Council
National Parks Conservation Association

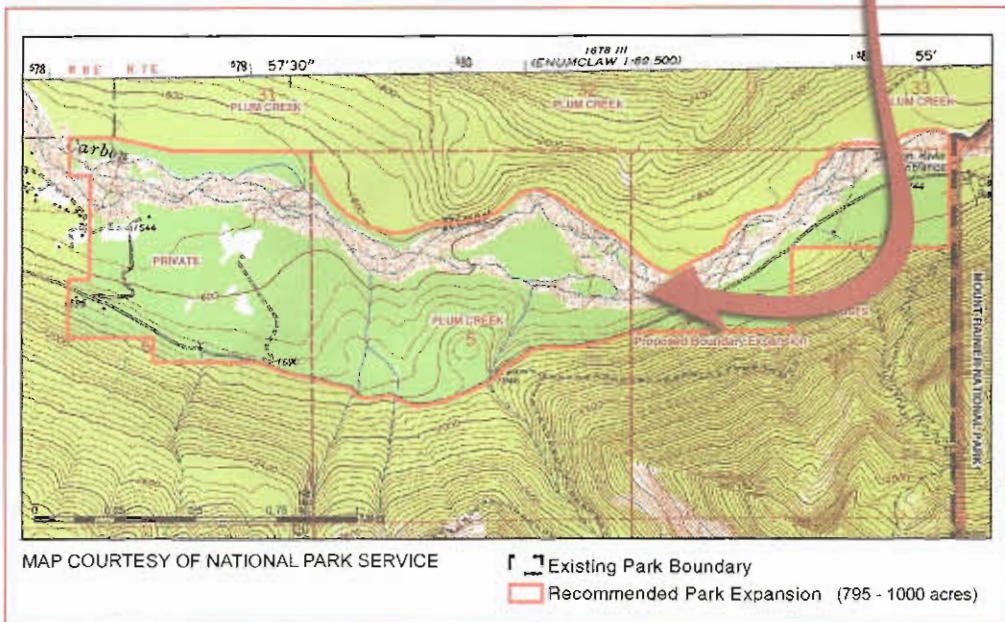
The Carbon River Valley Conservation begins within Mount Rainier National Park at the Carbon River, the largest and lowest glacier in the continental U.S.



Map Artist: Mary Sue Gee

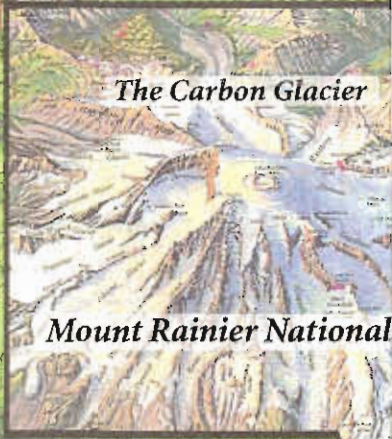
Central Puget Lowland Southern Puget Prairie Eastern Puget Riverine Lowland Eastern Puget Upland Western Cascade Lowland & Valleys Cascade Mountain H

Mt. Rainier National Park Boundary Extension



MAP COURTESY OF NATIONAL PARK SERVICE

Existing Park Boundary
Recommended Park Expansion (795 - 1000 acres)



The Carbon Glacier

Mount Rainier National



Temperate Rainforest
National Park Service

The upper Carbon River Valley is home to one of the last and largest inland old-growth rainforests in the Pacific Northwest. The Valley is a critical life corridor from Mount Rainier National Park to Puget Sound.

The Valley supports threatened and endangered species, including chinook and sockeye salmon, steelhead, bull trout, northern goshawk, northern spotted owl, marbled murrelet, and Van Dyke's salamander.

Salmor

Project
Carbon Glacier,
United States.



Highlands Subalpine/Alpine

Carbon River Valley is home
to the most spectacular
rainforests in the US.
It is a critical link in the wild-
land corridor of the Carbon River to its
confluence with the Puyallup River, protecting
important habitat for federally-listed threatened
and endangered species. Extending the Park
along the Carbon River watershed creates a
lifeline that safeguards the ecological integrity
of the valley and sustains Mount Rainier Na-
tional Park.



Tahoma Audubon

With your help we can:

- ① **Extend Mount Rainier National Park.** Extend the boundary three miles down the Carbon River Valley, placing critical riparian habitat and rainforest under Park stewardship.
- ② **Secure critical wildlife corridors.** Vital open spaces will be linked and protected by a variety of public and private owners.

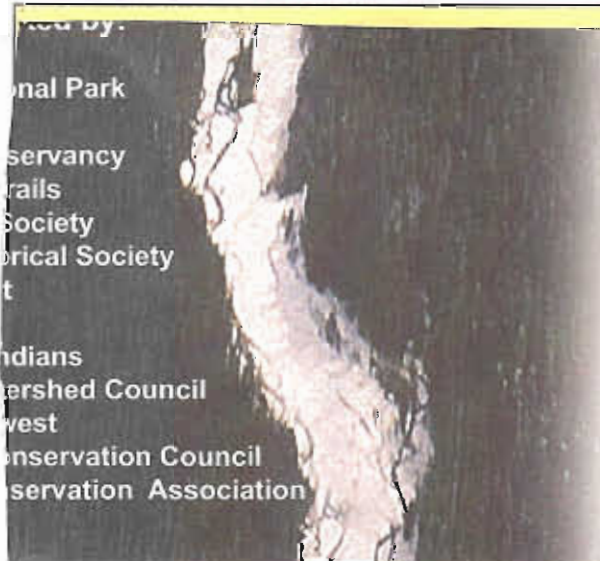
*Success!!
Fairfax Forest, 1,040 acres of critical wildlife habitat including old-growth, was placed into conservancy status by Washington State DNR and Pierce County.*
- ③ **Extend Foothills Rails-to-Trails to Mount Rainier National Park.** Bike or hike from Tacoma to Mount Rainier National Park!
- ④ **Protect and designate important historical landmarks.** Preserve the Fairfax Bridge, the Wilkeson Coke Ovens, the Wilkeson Sandstone School, and other historic sites.
- 5 **Increase economic opportunities in the gateway communities.** Enhance Wilkeson, Carbonado, Upper Fairfax, Burnett, and South Prairie by emphasizing ecological restoration, tourism, and sustainable timber practices.
- 6 **Bring together the Park, land conservancies, locals, and timber companies.** Explore new ideas and initiatives for sustainable, economically viable, and ecologically compatible forestry within the Carbon River Valley, buffering Mount Rainier National Park.
- 7 **Preserve stunning mountain views.** Secure valley vistas and landmarks for present and future generations.

What you can do:

Secure congressional support for the boundary extension of Mount Rainier National Park.
Contact your elected officials.

U.S. Senate
Ph: (202) 224-3121
www.senate.gov

U. S. House of Representatives
Ph: (202) 224-3121
www.house.gov



Extend the boundary three miles down the corridor of the Carbon River to its confluence with the Puyallup River, protecting important habitat for federally-listed threatened and endangered species. Extending the Park along the Carbon River watershed creates a lifeline that safeguards the ecological integrity of the valley and sustains Mount Rainier National Park.

This effort needs congressional approval. Please contact and urge your elected officials to support this extension.

...ed by:
...nal Park
...servancy
...rails
...Society
...orical Society
...t
...ndians
...rshed Council
...west
...nservation Council
...nservation Association